

DESIGN CRITERIA FOR MOLDED RIBBON CABLE

WIRE SIZES:

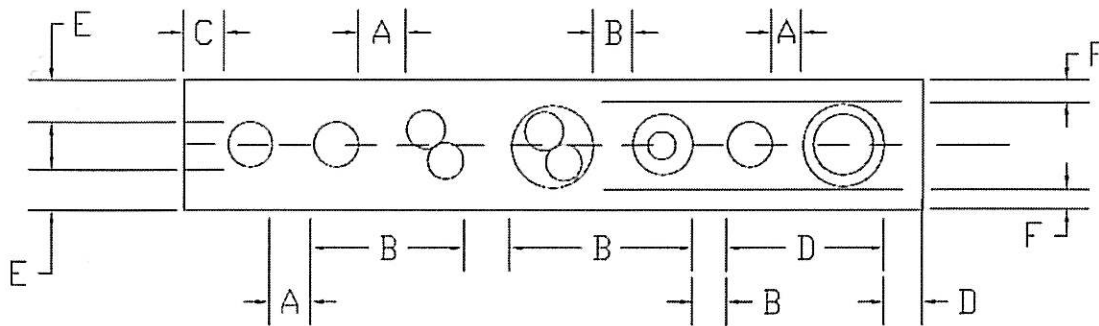
Wire diameters of high strand count wire used by Unique Electronics. Wire physical and electrical characteristics conform to MIS-35755.

AWG	UNINSULATED	INSULATED	TP	TT	SS	STP	STT
12	.106	.125					
14	.085	.096	.177	.206			
16	.067	.077	.122	.144			
18	.052	.063	.115	.135			
20	.042	.050	.094	.103	.062	.100	.120
22	.032	.042	.074	.084	.054	.082	.096
24	.027	.036	.066	.072	.048	.074	.082
26	.021	.030	.054	.062	.040	.064	.072
28	.017	.025	.048	.050	.036	.054	.060
30	.012	.022	.044	.047	.032	.050	.057
32	.009	.020					

NOTE: Keep wire gauges to a minimum.

SPACING BETWEEN CONDUCTORS:

- A. Minimum spacing between insulated cond. .010
- B. Minimum spacing between shielded cond. .015
- C. Minimum edge spacing over insulated wire .025
- D. Minimum edge spacing over shielded wire .040
- E. Insulation over insulated wires .010 to .015
- F. Insulation over shielded wires .015 to .020



RIBBON COMPOUNDS:

Polyurethane: Use for rough handling, high abrasion, low friction applications and operation temperatures not to exceed 300 degrees. Fahrenheit.

Silicone: Use for extreme flexibility and high temperature operation (500 degrees F).